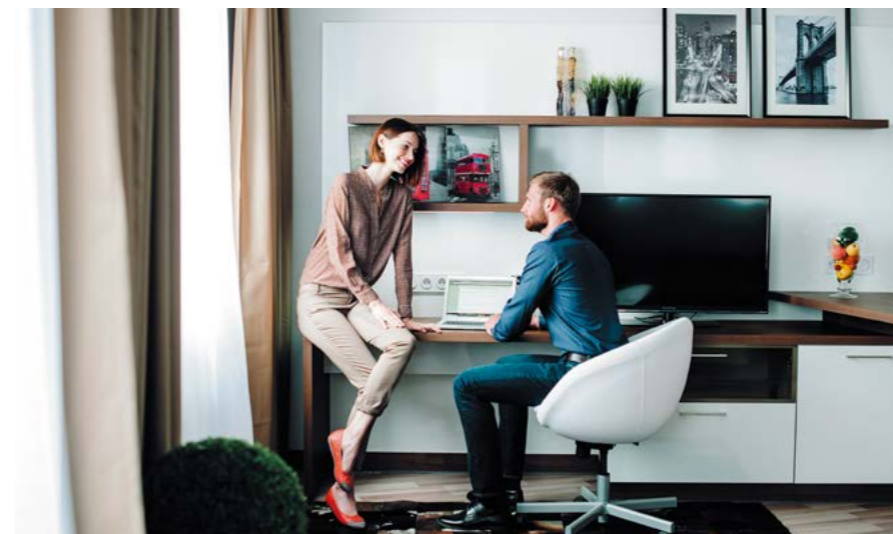




**ESSENTIAL
LIFESTYLE**

yesapart.com





ESSENTIAL LIFESTYLE

Need a home in St.Petersburg?

We offer comfortable rooms with a wide range of extra services, from cleaning to bike rental. Aparthotel YE'S has facilities that make your stay a pleasant one for the best possible price. You can visit a gym with a swimming pool, go to a restaurant or a dry-cleaner without actually leaving the premises.

The apart-hotel owes its comfort, homelike atmosphere and high level of services to its highly competent, professional and considerate staff. From the list of services you are free to choose only those you need for comfortable living, thus avoiding any unnecessary costs.

Aparthotel YE'S is located about 300 meters away from the Prospekt Prosveshcheniya metro station in a dynamic and well-developed district with a lot of shops, banks, restaurants.

- price reductions for long-term rentals
- stable and transparent contractual terms
- special offers for business
- hotel services



APARTHOTEL FACILITIES



Aparthotel facilities:

- Restaurant
- Fitness and spa center
- 25-meter swimming pool
- Dry-cleaner and laundry
- Underground parking
- Seasonal storage



EVERYTHING FOR COMFORTABLE LIVING

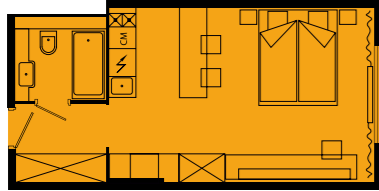
To ensure your stay is a complete success, we offer fully equipped apartments.

- High-quality design decoration
- Furniture from Hanak, top leading European interior specialists
- Wardrobe
- Double bed with storage space
- Dining table for several seats
- Office area with a chair
- Equipped kitchen: refrigerator with freezer compartment, hob, microwave, kettle
- Washer
- Comfortable bathroom: large mirror, bathtub and shower with massage
- TV with international channels
- Wi-Fi
- Telephone

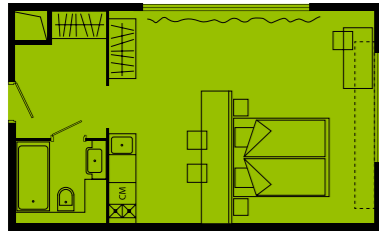


All apartments are completely ready to move in and specially designed for long-term stay. Live life at your own pace! Cook, work and rest. Pets are welcome!

TYPES OF APARTMENTS



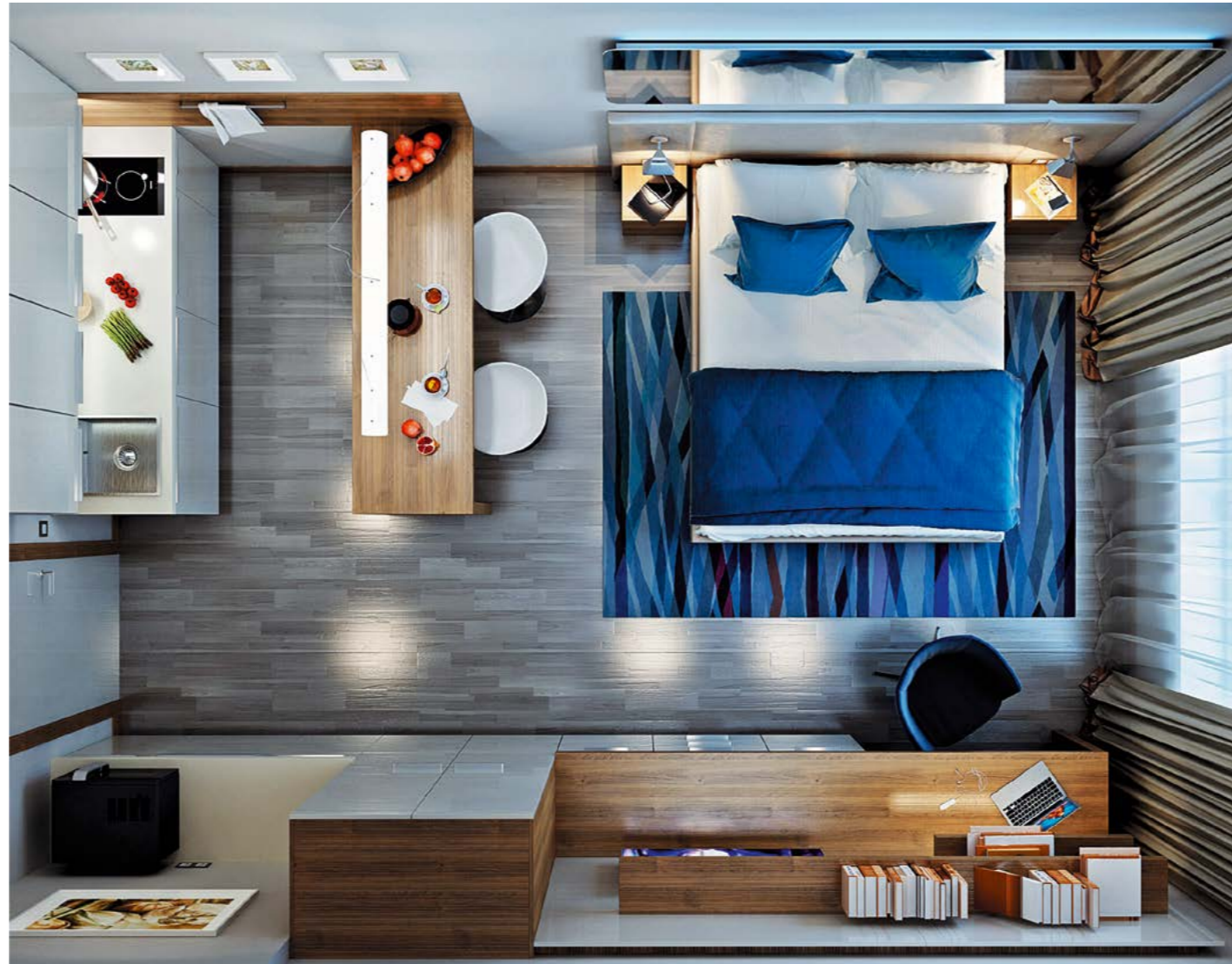
Standard



Superior



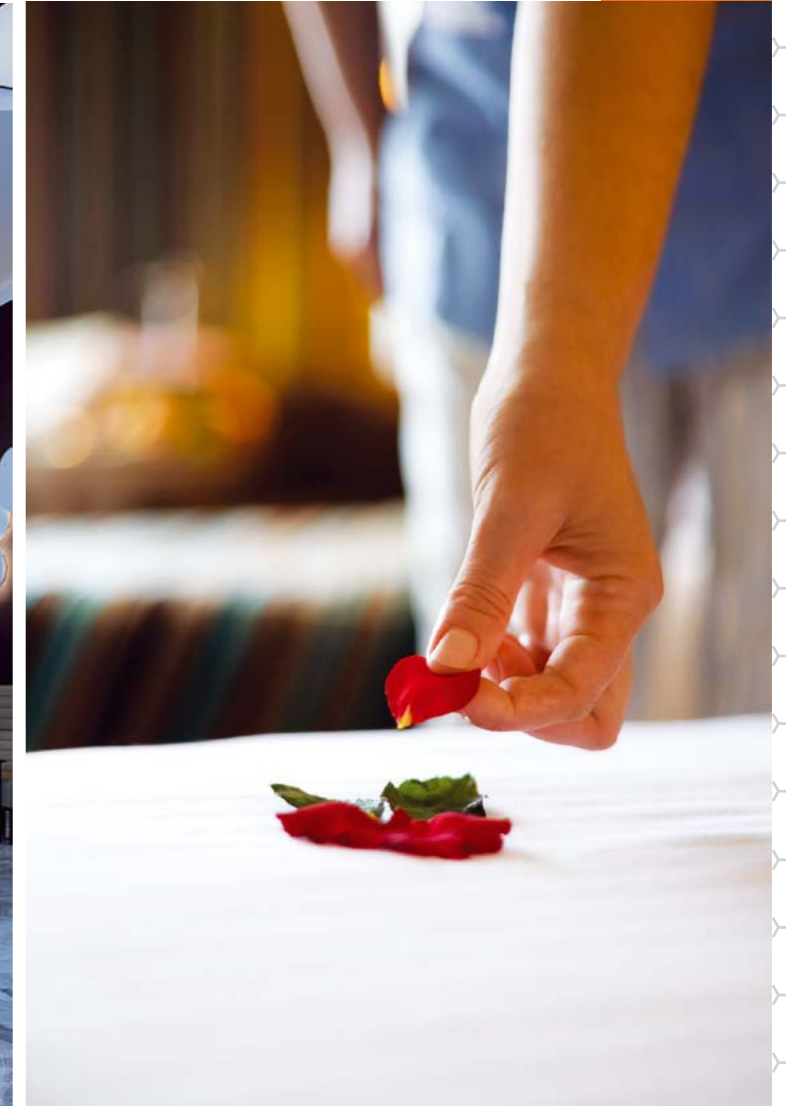
Deluxe



- **Standard** 27–29 sq. m
- **Superior** 31–35 sq. m
- **Deluxe** 42 sq. m

SERVICES

- 24/7 reception with English-speaking staff
- Security control system
- Concierge service: booking of tickets, restaurants, taxi, etc.
- 24/7 room service
- Housekeeping
- Dry-cleaner and laundry
- Wi-Fi
- International TV channels
- Mini business center
- Storage services
- Car and bicycle rentals
- Underground parking
- Insurance services
- Translation services
- Resident registration



LOCATION

Aparthotel YE'S is perfectly located in one of the most developed part of Saint-Petersburg. It is near metro station and major city roads, so you can easily reach any destination you want. Makes its location very convenient for car owners.



- **Supermarkets**
 - Perekrestok
 - O'KEY
 - Prizma
- **Restaurants**
 - Munhell
 - APARTMENT No. 286
 - Pelikano
 - PUB Bar
- **Medical Centers**
 - Altermed
 - MAPE Family Practice Center
 - Injury Treatment and Orthopedics Center
- **Pharmacies**
 - Ozerky
 - Pervaya Pomoshch
 - Raduga
- **Fitness centers**
 - Prestige Fitness
 - FITCURVES
 - ILOVSPORT
- **Post office**
- **Banks**
 - Bank Saint Petersburg
 - Gazprombank
 - Sberbank
 - Promsvyazbank
- **Trading centers**
 - Nord
 - Grand Canyon
 - Cosmopolis
 - Ozerky
 - Avenue
- **Grocery stores**
 - Land
 - Azbuka Vkusa
- **Schools**
 - №463
 - №486
 - № 488
- **Kindergartens**
 - № 122
 - № 110
 - № 104

- 5 minutes drive to the Ring Road
- 3 minutes to Prospekt Prosveshcheniya metro station
- 20 minutes to the city center



PROJECT DEVELOPER



Pioneer Group focuses on developing mixed-use properties and residential complexes, with further property management and full range of facility services.

Pioneer Group profile:

- Project portfolio of more than 1 million sq. m.;
- 19.18 bln. rubles - the amount of the assets;
- Representative offices in Moscow and St. Petersburg;
- The company's revenue in 2014 amounted to 18.55 bln. rub., exceeding the performance in 2013 almost three times. The company's development strategy for 2013-2017 incorporates the annual revenue growth by an average of 25%;
- Net income of Pioneer Group has reached 859.2 mln. rub. (Previous year - 22.8 mln. rub.);
- EBITDA for the accounting period amounted to 1.89 bln. rub. against 512 mln. in 2013;

Credit ratings at «B-» and «BBB», with a stable outlook, assigned by the international rating agency Standard & Poor's (S & P), which indicates a high degree of reliability and transparency of the company.

The YES Aparthotel chain is being developed as part of Pioneer Group innovative projects. The first aparthotel was built in Saint-Petersburg, the second one is under construction in Moscow.



RENTAL DEPARTMENT

16 Ho Chi Minh St., Saint-Petersburg

+7 (812) 333 42 02

office@yesapart.com

yesapart.com